

PHOTOSHOP

EXCLUSIVE HAIR TUTORIAL



HOW TO CREATE FUN ASIAN HAIR

FOLLOW CINDY STEP BY STEP

CINDY GRUNDSTEN

www.cindysart.weebly.com

www.cindyartdesign.se

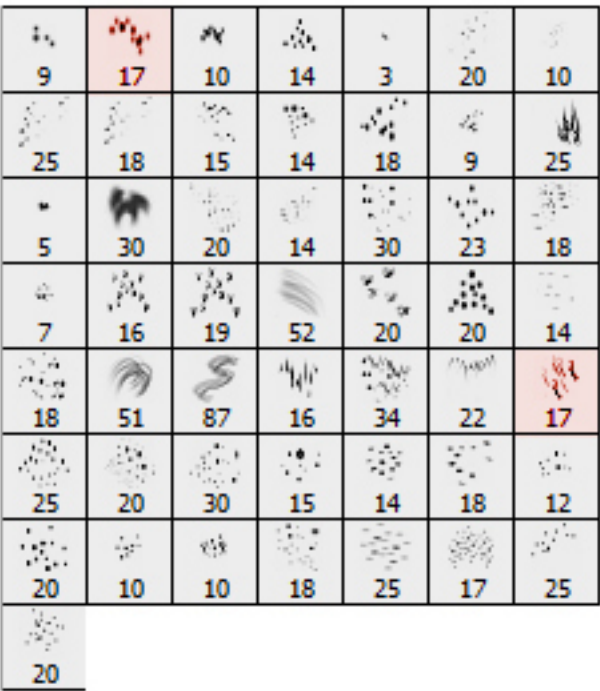


There are many different ways to paint hair in Photoshop and there are tons of tutorials to find on The Internet showing different techniques. I’ve yet not find any tutorial that feels right to me, so therefore I have spent many hours to find my own way to paint hair. I want to be better on hair so I will continue to spend time for practises.

In this tutorial I will show you how I created an Asian hairstyle and how I used the models own hair as a reference for both the hair colours and the look of the hair strands.

Tools I have used

Photoshop CS3
Wacom Intous 3
Hair brushes from Antje <http://www.renderosity.com/mod/bcs/index.php?ViewProduct=34321>
Model from http://www.photoxpress.com/search-photos?q=4629034&category=all&newest=all&orientation=all&xper_page=24
Hair sticks from <http://www.dreamstime.com/hair-piece-chop-sticks-red-image10189343>
Dodge and Burn
Gaussian blur



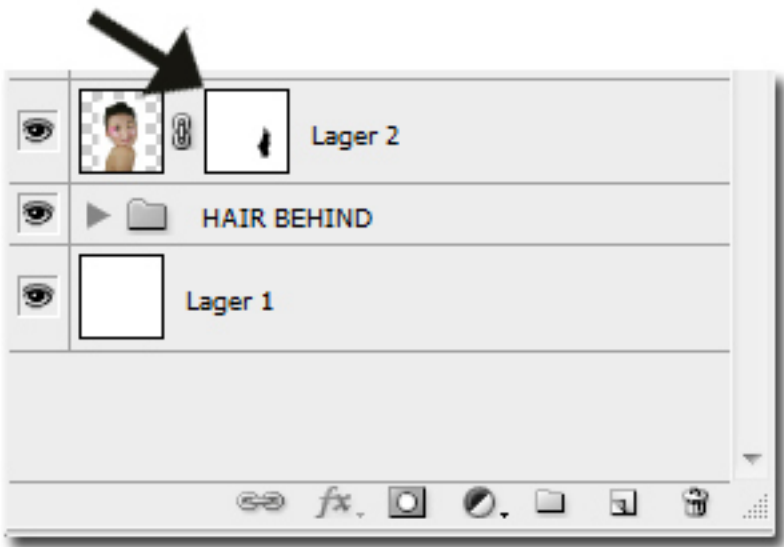
For this work I have used two different brushes. Both in 17 pixels size
Please note that you can use photoshop’s default brushes too with a very good result.

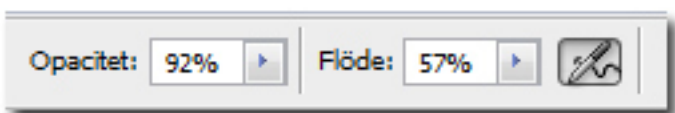
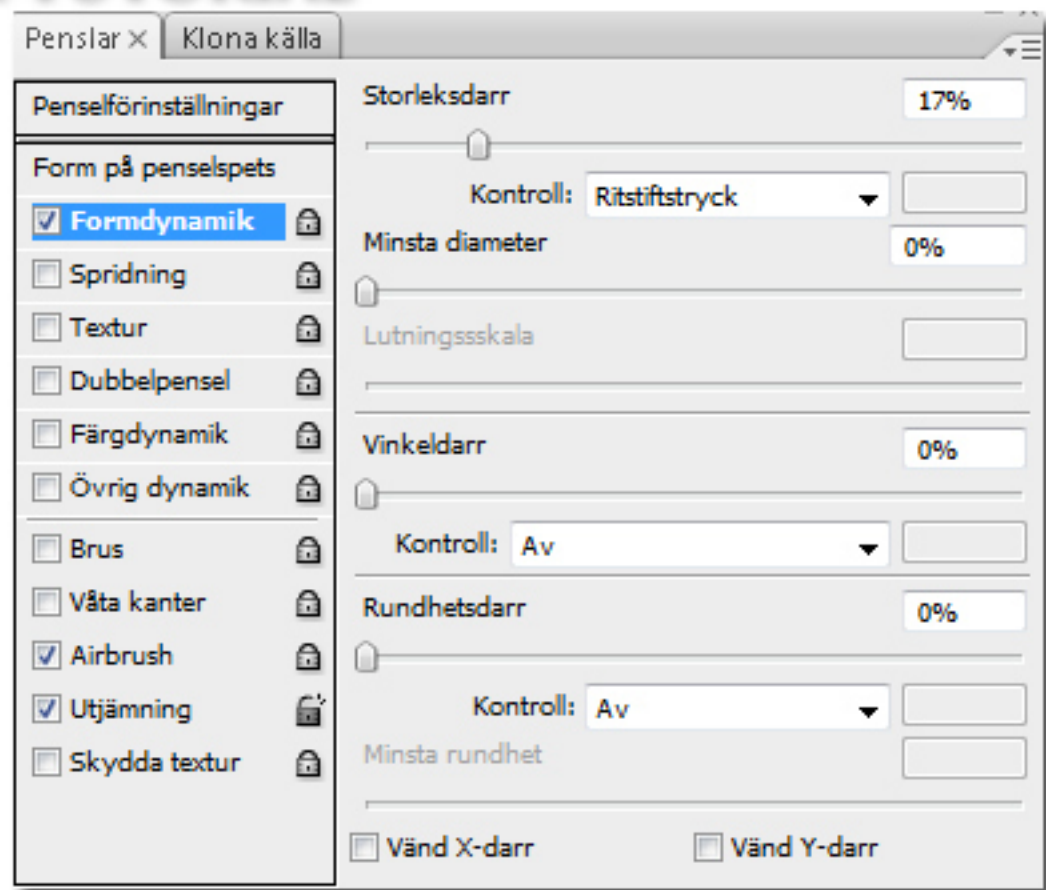
Now let’s get started!

Here is the original image of the model and now we will begin painting on a fun Asian hairstyle



The model is on white background and I will not change that. But I need to paint some hair from behind so I need to make some cut. I do that with a Layer Mask and a quite soft brush.
If you need to change background you have to cut the whole model out before you start painting the hair.





These are my settings in the Brushes Panel and the Options Bar when I start with image 4. Since my panel are in Swedish I may have to explain them. The Brushes Panels have Shapes Dynamics, Airbrush and Smoothing activated and the setting for Size Jitter in Shape Dynamic is 17% with Pen Pressure checked. The settings for the Brush up in the Options Bar is set to Opacity 92% and flow 57%,

Later on in the work process you will have to change the settings for Opacity and Flow several times, depending on how strong you want the hair strand to appear. Some strands should be stronger and some should be more blurred.

I won't show you all the layers that builds up my hairpainting. There are 49 of them with new, smaller and lighter strands. I'm sure you will understand the workflow anyways. I good practice is to put all the hair layers in a Layer Group (Layer > New > Group) it will help you out alot further down the workflow.



1



Take a colour sample with the Eye Dropper Tool from the darkest parts of the models hair. Start by roughly painting the hairstyle you want.



2

Fill your roughly painted hairstyle with the same colour. Then I will use a color sampled from her own hair, as you can see in the middle of the image. I will also paint over her real hair to blend it in with it.



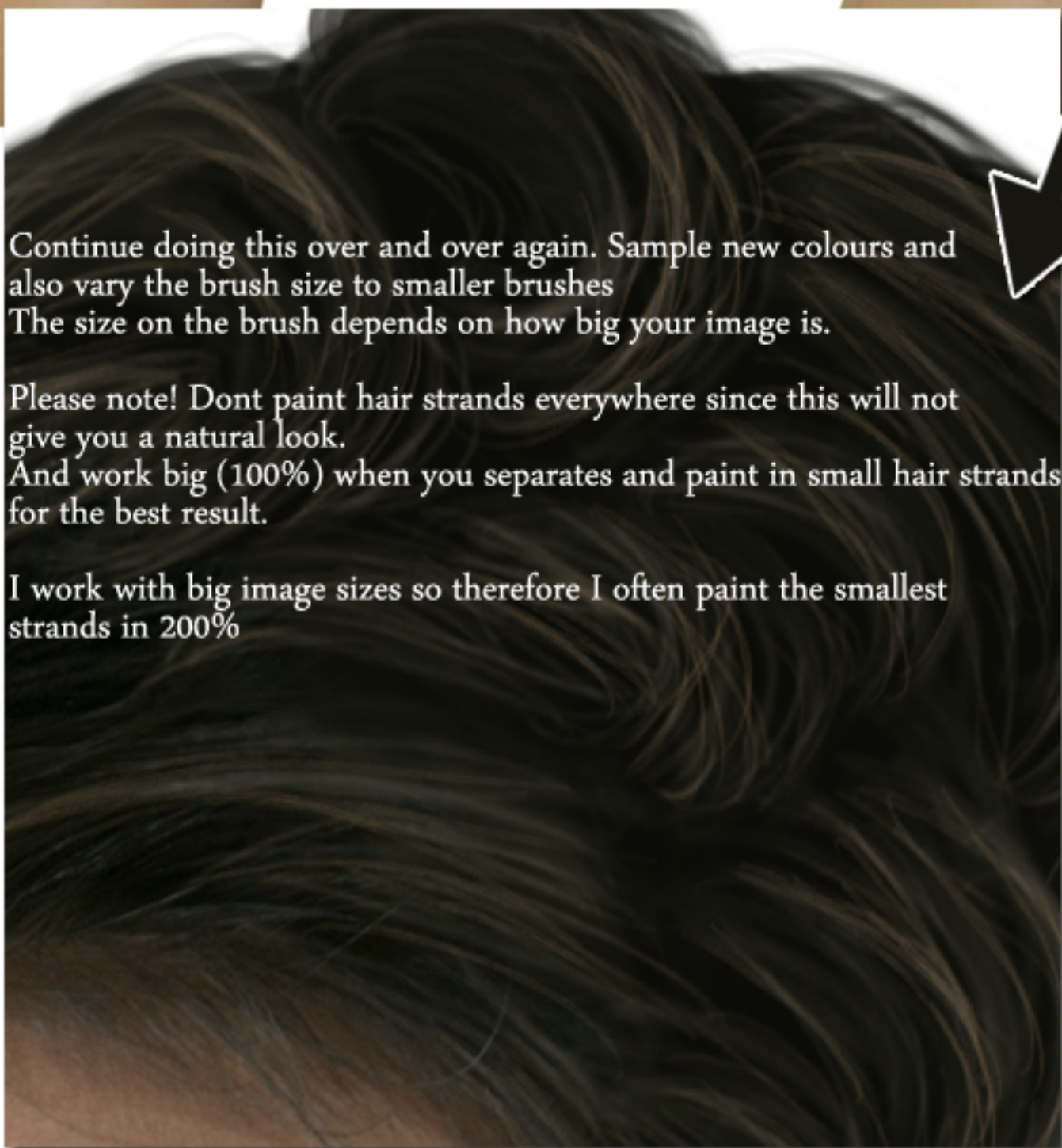
3

On a new layer with the same brush, pick a new and lighter colour from her own hair and paint the shape of the hair.



4

Again a new layer, and this time I change the brush and my settings in the Brush Panel and the Options Bar. Now pic another brush and do the same thing again. Sample a new and lighter colour and paint in more hair strands.



Continue doing this over and over again. Sample new colours and also vary the brush size to smaller brushes. The size on the brush depends on how big your image is.

Please note! Dont paint hair strands everywhere since this will not give you a natural look. And work big (100%) when you separates and paint in small hair strands for the best result.

I work with big image sizes so therefore I often paint the smallest strands in 200%



5



6

With the same brush but a smaller size
I go on painting strands, lighter and thinner.



7



8

Next you paint some high lighted strands
on a new layer with a smaller brush.

Duplicate the layer with the high lighted strands
and change the Blending Mode of the layer to Overlay.



9



10

Now its time to do all the stray hairs and fly-aways.
No hair is perfect - ever.
So start painting with the same brush, or if you rather
use another brush.
It doesn 't really matter. The main thing is that the brush
must be small (1 - 2 pix)



Paint harder and lighter strands in different sizes.



Now its time to fill the hair itself with some stray hairs and fly-aways too.
 If you take a look at photos of hair you can see lots of thin strands going in different directions.

Use a very smal brushes for this, and as I've sad before, how small depends on your image size.
 But somewhere between 1 - 2 pxl for all thin flying hairs.
 I have used 1 pxl.



When we have come this far with our painting and think its good enough, it's time to turn all the hair layers off.
 Klick on the Eye Icon for every layer containing your painted hair.

Then turn them on again one by one from the first layer and take a good look at them.
 If there's something as look wierd, remove it by using a Layer Mask or the Eraser Tool. I recomend using a Layer Mask
 If you happend to make any mistakes.
 You also need to see if there is some of the layers that need some blurring. Every hair strand can't be sharp so you need
 to blur some of the layers and your eyes must choose which once to blur.

Some people use the Smudge Tool and of course you can do that too, but I dont like it and that's why I use
 the Gaussian Blur instead for this step.

Now we are almost finished. Close the Layer Group with all the hair layers and dublicate it. Now you have two Layer Groups.
 Close one of them. Right-click on the other and Merge Group.

I always do this dublicate to be on the safe side if something happends. When the hair is finished and I am pleased with it
 I throw away the extra Layer Group.

Now you have one layer with all the painted hair in it. Dublicate that layer and put some more Gaussian Blur on it.
 You may have to lower the Opacity for that layer if you've got too much blur on it.
 Add a Layer Mask to the layer and paint away the blurred hair where you dont want it. I needed the blur on the
 fly-away strands.

Create a new layer, put it in Soft Light blending mode, fill it with 50% gray and darken parts of the hair with the
 Burn Tool. Then create another new layer in Soft Light blending mode, fill it with 50% gray and lightens part of the hair
 with the Dodge Tool. This part is to get volume to the hair.





13

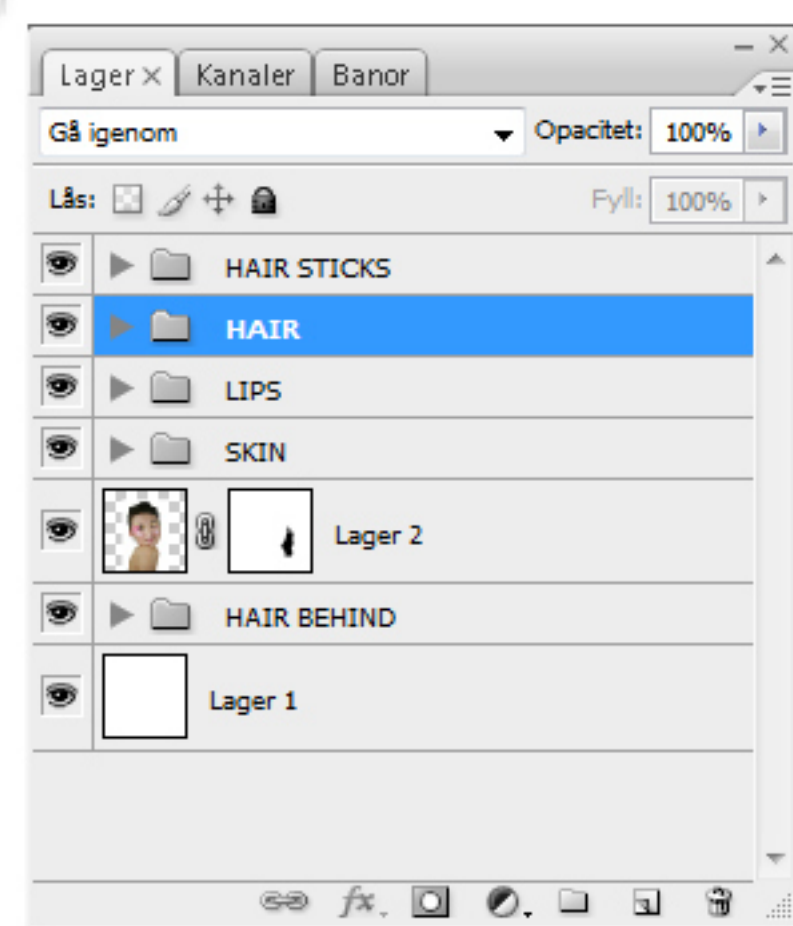
I've changed the hair colour a little bit with Color Balance on the layer with no blur.

Now I'm finished and I just want to do some painting on her face. I paint with a soft brush with low Opacity - around 8% and a light, almost white colour on her face. And some red lips. That's all.

Then I cut out the hair sticks and place them in the hair. Then I add a Layer Mask and choose a Hair Brush to paint back some hair over the hair sticks.



14



I hope you don't find this tutorial too difficult to understand. If you never have painted hair before you might feel it's difficult, but the only thing to do is to practise. Soon you probably will find your own style, or maybe you will find some tutorial that fits you perfectly.

You should not be stuck with this tutorial. This is only how I painted this particular Asian hair. Another hairstyle is another tutorial. But you can always use the same method.

I hope this tutorial was of some help to you.

Good luck!